





# ABOUT US

Established in 1983, G & T CHICKENS is an Australian owned and operated second generation family business. Located in Brooklyn Victoria, servicing all of Australia, G & T Chickens has grown into the nation's leading manufacturer and supplier of quality hand cut chicken schnitzels and value-added chicken products.

With over 38 years of experience in the industry, we pride ourselves on our commitment to manufacturing and supplying only the finest quality poultry products consistently. We provide our clients with the highest level of customer service and satisfaction all whilst ensuring your cost of goods are accommodated.

Our value-added products are distributed nationally, direct from the factory or via our distribution partners. We are proud of our extensive distribution network, delivering quality poultry products in a time and cost-effective manner throughout the nation.





# LARGE BREAST CHICKEN SCHNITZEL

Our bestselling product. Hand cut chicken breast fillet, double butterflied and coated with our special blend breadcrumb. Perfect as a centre of plate meal, chicken parmigiana, cut in half for a focaccia, roll or sandwich. Ideal for pubs, clubs, hotels, restaurants, cafes, take away shops and delis. Also available in Panko crumb.

Weight: 300-320g

Product Codes: SN LB / SN JLB / SN XL PANKO





# SPECIAL BREAST CHICKEN SCHNITZEL

Hand cut chicken breast fillet single sliced for a thick meat profile and coated with our special blend breadcrumb. Perfect as a centre of plate meal, chicken parmigiana, cut in half for a focaccia, roll or sandwich. Ideal for pubs, clubs, hotels, restaurants, cafes, take away shops and delis. Also available in Panko crumb.

Weight: 240-260g

Product Codes: SN SP / SN XL HEART / SN MEDIUM





# BABY BREAST CHICKEN SCHNITZEL

Hand cut chicken breast fillet single sliced for a thick meat profile and coated with our special blend breadcrumb. Perfectly portioned for high volume end users. Specifically produced for burgers, sliders, and small chicken parmigiana. Ideal for QSR, nursing homes, school canteens, and take-away shops. Also available in Panko crumb.

Weight: 140-160g

Product Codes: SN JBABY





# SMALL BREAST CHICKEN SCHNITZEL

Like its big brother, the small breast chicken schnitzel is an all-natural hand-cut chicken breast fillet, double butterflied and coated with our special blend breadcrumb. Ideal for takeaway shops, cafes, canteens, and nursing homes. Perfect for chicken parmigiana, rolls or focaccias. Also available in Panko crumb.

Weight: 240-260g

Product Codes: SN JSB





# PREMIUM BREAST CHICKEN SCHNITZEL

A thick and tender full breast schnitzel butterflied open for a thick meat profile, and lightly crumbed with our special blend breadcrumb. Perfect for high end venues including pubs, clubs, and restaurants. Also available in Panko crumb.

Weight: 300-320g

Product Codes: SN PREM / SN JPREM





# PUB STYLE BREAST CHICKEN SCHNITZEL

A thick and tender full breast schnitzel, triple butterflied for that unique look and huge plate coverage. Single crumbed with our authentic Japanese Panko breadcrumb. A standout product. Perfect for all high-end venues including pubs, clubs, and restaurants. A schnitzel like no other. Also available in a double crumbed format.

Weight: 300-320G

Product Codes:

SN DIXON250 300-320g Fresh Only

SN DIXON300 340-360g Fresh Only

SN DX250 340-360g Frozen





# CRUMBED CHICKEN TENDERLOINS

A thick and tender full breast schnitzel butterflied open for a thick meat profile, and lightly crumbed with our special blend breadcrumb. Perfect for high end venues including pubs, clubs, and restaurants. Also available in Panko crumb.

Weight: 80-100g

Product Codes: SN CRJTENDER





# PANKO SUPERIOR BREAST CHICKEN

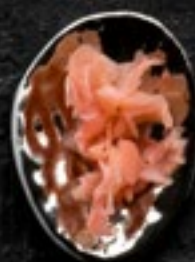
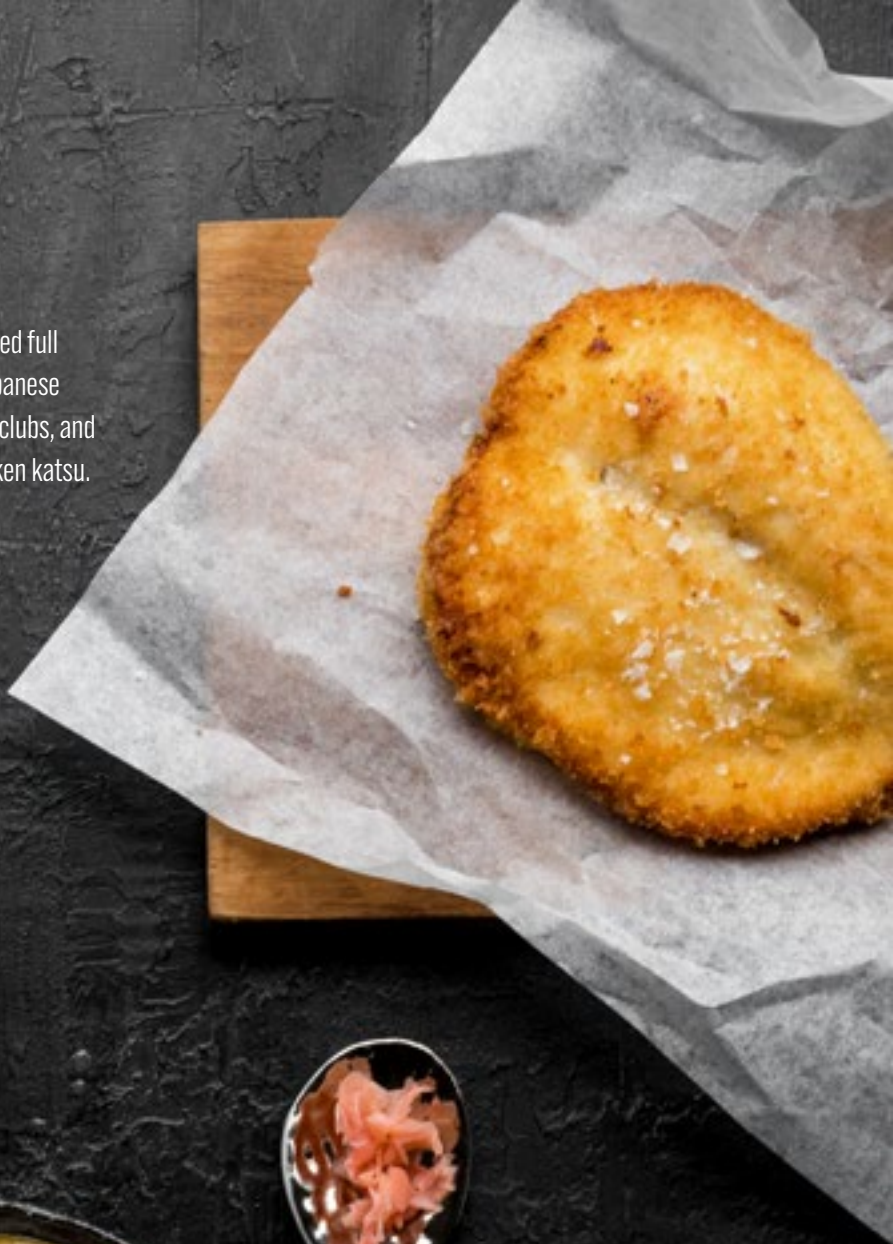
Our gourmet creation. An authentic hand sliced, single butterflied full breast fillet, tenderloin off. Single coated with our authentic Japanese Panko breadcrumb. Perfect for high end venues, such as pubs, clubs, and restaurants. Ideal on its own, for a chicken parmigiana, or chicken katsu.

Product Codes:

SN JSUP16 (240-260g) \*Fresh Only

SN JSUP19 (280-300g) \*Fresh Only

SN PANK016 (300-320g)





# SANDWICH BREAST CHICKEN SCHNITZEL

A smaller portioned double butterflied hand cut chicken breast schnitzel. Ideal for QSR, nursing homes, school canteens, take away shops, pubs, and hotels. Perfect for your next chicken parmigiana specials night. Also available in Panko crumb.

Weight: 200-220g

Product Code: SN SW





# MARINATED CHICKEN THIGH KEBAB

Hand diced and skewered chicken thigh fillet. Marinated with our specially designed herbs and spices. Large portion for serving as a centre of plate dish, or ideal for cafes, take away shops, canteens and QSR.

Product Codes: KB





# HALF LARGE BREAST CHICKEN SCHNITZEL

Half breast fillet hand sliced and double crumbed to perfection. Ideal for aged care, QSR, cafes and take away shops.

\* Also available in Panko crumb.

Weight: 130-150g

Product Code:

SN JHALFLB

SN HALFLB

SN SMBABHE

SN ZHBABY





# PANKO BUTTERFLY BREAST CHICKEN

The chefs staple chicken schnitzel. An authentic hand sliced, single butterflyed full breast fillet, tenderloin off. Single coated with our authentic Japanese Panko breadcrumb. With its thick meat profile, you get a juice and tender product every time. Perfect for high end venues, such as pubs, clubs, and restaurants.

Product Codes:

SN BFPANK016 (200-220g) \*Fresh Only

SN JSUPXLB/F (240-260g) \*Fresh Only

SN DXCA300 (320-340g) \* Fresh Only





# WE DELIVER AUSTRALIA WIDE

With our own fleet of HACCP certified and licensed refrigerated vehicles we are able to deliver the products you need safely and efficiently. We currently deliver to all inner suburbs of Melbourne 5 days a week. Our drivers prepare for their runs at 5 am and are on the road by 6 am to ensure that deliveries get to our clients on time, every time.

We are also able to deliver anywhere in Australia via refrigerated HACCP transport. Our value-added products can be delivered to:

Australian Capital Territory  
New South Wales  
Queensland  
South Australia  
Western Australia  
Northern Territory  
Tasmania





# CONTACT US

Please call the office, email the sales department or use our web form below to place your order. Please note that all orders need to be placed prior to 8pm for next day delivery.

T: +61 3 9315 3383

F: +61 3 9315 3387

E: [info@gtchickens.com](mailto:info@gtchickens.com)

E: [orders@gtchickens.com](mailto:orders@gtchickens.com)

24 Industry Park Drive  
Brooklyn 3012

